

Martinez Historical Society
1005 Escobar Street
Martinez, California

September 6, 2012

FOR IMMEDIATE RELEASE

Contact:

Carolyn Boone Duncan
cfboone@aol.com
(925) 864-8457

John D. Curtis
CurtisJD@ix.netcom.com
(925) 957-1000

MARTINEZ – On Saturday, October 13th, enjoy a tour of seven (7) private homes representing the architecture of the late 19th and early 20th centuries in historical Martinez.

The tour begins at the Shell Club House with its intact Arts & Craft interior and the adjacent Shell Oil Museum – both located at 1635 Pacheco Drive. The tour includes the 1890 Borland House (home of the Martinez Museum), John Muir’s 1882 Italianate Victorian Home and the 1849 Martinez Adobe. A point of interest on the Tour is the monument where that most iconic of American cocktails was invented in 1874: the Martini.

This year’s tour includes an exhibit of historical photographs and vintage camera equipment, live musicians at several locations, craft demonstrations, displays of art, and refreshments. Also included is a side tour of the Nature’s Way Doll Centre with its collection of historical Dolls.

Tickets are \$25 and are tax deductible. Tickets can be purchased from Char’s Flowers (516 Main Street), Romain’s Jewelry (510 Center Avenue), Bagel Street Café (580 Center Avenue), The UPS Store (the Lucky Shopping Center) and I’ve Been Framed (411 Ferry Street). For online purchase of tickets using a credit card, please go to Eventbrite (martinezhometour2012.eventbrite.com).

Proceeds from the Tour will benefit the Historical Society’s effort to restore and reopen the Old Train Depot in downtown Martinez portions of which date back to 1877.

You can drive the Tour route, or utilize the free shuttle service that will be provided, with bus departures approximately every 10 minutes. Tour guides on the bus will entertain you with stories of historical Martinez. Wear comfortable shoes; once you reach Martinez City Hall, located in the district where the homes are located, you may wish to walk the Tour. The tour is self-paced. The Tour will take place rain or shine. Tour hours are from 10 am to 4 pm. Plan on about two (2) hours to completely enjoy the event. For more information, please visit the Tour [website](http://www.MartinezHomeTour.com) (www.MartinezHomeTour.com).

No children under 12 years of age (infants may be carried in arms or belly carrier). Due to the period of the homes, they are not wheelchair accessible. We regret that taking pictures is not allowed inside the homes.

A special thanks to the Tour's gold sponsors: Shell Martinez Refinery, S and S Supplies & Solutions, and Cole Real Estate. Also many thanks to the tour's bronze sponsors: Shell Chemical, Allied Waste, Hagin's Automotive, Shell Western States Federal Credit Union, and Kinder's.

###

Photographs are available to accompany articles. Sample photos follow. To see more photos, please email Janie Mori at morijane@yahoo.com. Janie can also provide higher resolution or uncaptioned photographs.



The Martinez Home Tour

Don't miss the annual Martinez Home Tour -- the 2nd Saturday each October.

www.MartinezHomeTour.com



This is a home which will be on the 2012 Martinez Home Tour. It is an example of the Victorian Italianate Style. Such homes are characterized by low rooflines, ornamental brackets and a symmetrical shape -- intended to evoke the image of an Italian Renaissance villa.



The Arts & Craft Movement gave rise to the Craftsman Bungalow. The heyday of this house style was the 1905 - 1929 time period. This attractively painted example with its red roof brackets, window box and period windows will be on the 2012 Martinez Home Tour.



This Victorian Cottage is directly across the street from the stone & brass monument honoring Martinez as the birthplace of the Martini. Since its inclusion on the 2010 Home Tour, this home has been partially remodeled and features an expanded collection of Martini art and musical instruments (the owners are musicians).



A point of interest on the Martinez Home Tour will be the monument placed on the spot where saloon keeper Julio Richelieu invented the Martini in 1874.



This 1920's Craftsman home on busy Alhambra Avenue is famous in Martinez because the owner cultivates a garden that is bursting with flowers every month of the year -- both in the highly visible front yard -- and in the private patio which can be seen during the Martinez Home Tour.



Owned by a knitter, visitors to the Victorian cottage during the Martinez Home Tour will be greeted with shelves of colorful yarn used in the owner's craft. The home's cheerful color scheme includes fish scale shingles in the gable painted in a variety of pastel shades.



This 1870s Victorian home was the town house of a prosperous Reliez Valley farmer. It appears in the book "Martinez: A Handbook of Houses and History". It has been thoughtfully restored and retains its original wood floors and varnished paneling.



An additional point of interest on the Martinez Home Tour will be the "Doll Hospital" at 1616 Alhambra Avenue where dolls are repaired, displayed and doll-making classes are conducted.



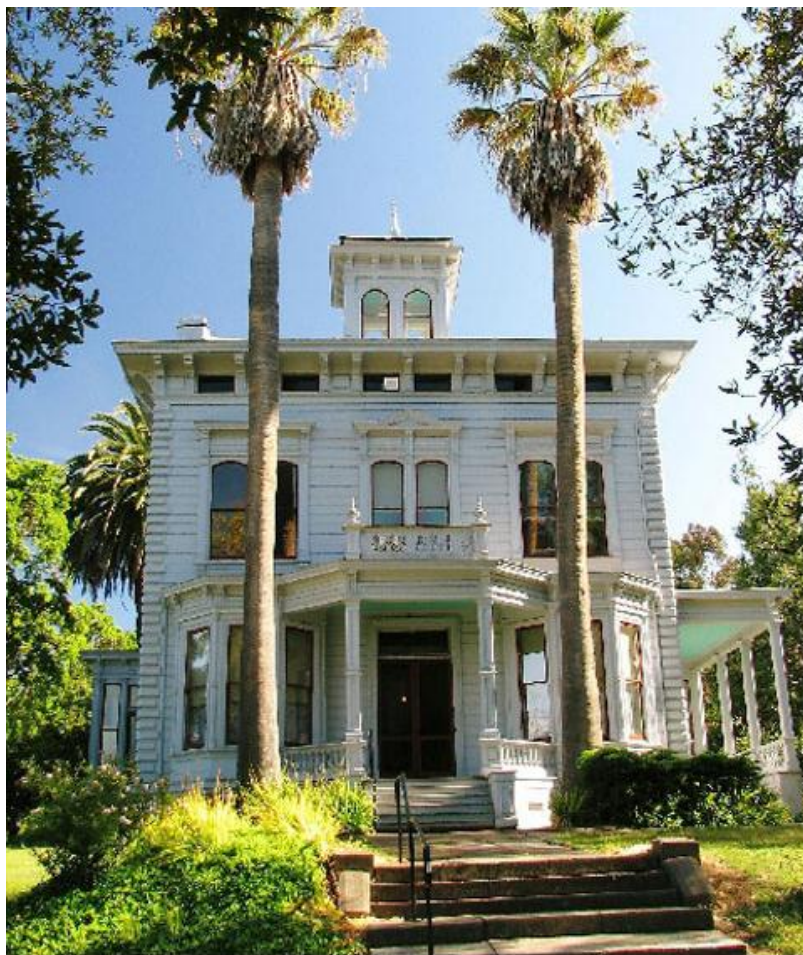
The Martinez Home Tour begins at the Shell Clubhouse which is located at 1635 Pacheco Boulevard on the edge of downtown Martinez. The Clubhouse still retains its 1937 Craftsman interior, original woodwork (including ceiling beams, paneling and decorative details), light fixtures and hardware.



The Shell Oil Museum is located near the Shell Clubhouse in Martinez. The Museum depicts the history of oil refining in Martinez -- beginning with the construction of the Shell Refinery in 1915. The Museum is staffed by docents who are retired Shell employees.



The Borland Home houses the Martinez Museum which is operated by the Martinez Historical Society at 1005 Escobar Street in Martinez. The home will be welcoming visitors from 10 am to 4 pm on Saturday October 8th, the day of the Martinez Home Tour.



When he wasn't trekking through his beloved Sierra Nevadas or when he wasn't visiting other wilderness areas, John Muir lived in this Martinez mansion from 1890 until his death in 1914.



The Martinez Adobe is one of the small number of structures in California dating back to Statehood and beyond. Constructed circa 1849, the building has been seismically retrofitted, and should now last the ages. It is currently displaying the first full scale exhibit on the historic de Anza Trail.