

# Historic Home Styles: In Martinez and Elsewhere

By John D. Curtis

July 2013



2008 Home Tour  
Tudor Revival — 1935  
1700 Pine Street, Martinez CA



2009 Home Tour  
Queen Anne Cottage (Victorian) — 1898  
1135 Susana Street, Martinez



2009 Home Tour  
English Cottage — 1928  
1010 Brown Street, Martinez



2013 Home Tour  
Colonial Revival — 1929  
1204 Ulfinian Way, Martinez

# Historic Home Styles

By John D. Curtis

July 2013

This listing of historic home styles, most of which appear in Martinez, California and environs, ends with World War II. There are many ways to group and present home styles. The following is the grouping preferred by the author. The period in which the style was most popular also appears below:

## Victorian and Sub-types

- Italianate – 1840 to 1885
- Gothic Revival – 1830 to 1860
- Queen Anne Style – 1876 to 1915
- Folk Victorian – 1870 to 1910
- Stick Style (Eastlake) – 1860 to 1890
- Second Empire – 1860 to 1900
- Romanesque Revival – 1840 to 1900
- Shingle Style – 1874 to 1910 (overlaps with Craftsmen style)

## Craftsman & Derivatives

- Arts & Crafts Style – 1880 to 1920
- American Foursquare<sup>i</sup> – 1895 to 1930
- Craftsman Style – 1900 to 1930
- Bungalow Style – 1900 to 1935
- Rustic Style – 1900 to 1960

## Continental Revival

- Neoclassical Revival Style – 1895 to 1950
- Italian Style – 1890 to 1935
- French Eclectic Style – 1915 to 1945
- French Norman or French Normandy – 1918 to 1940

## English Revival (Romantic Revival)

- Tudor Revival Style – 1890 to 1940
- English Cottage Style – 1920 to 1940
- Storybook Style – 1920 to 1930s

## California and the Southwest

- Californio and Monterey Colonial Adobes – 1835 to 1850+
- Mission Revival Style – 1890 to 1940 (mainly California)
- Spanish Colonial Revival Style – 1910 to 1940
- Pueblo Revival – 1912 to 1940
- Ranch Style – 1935 to 1980

## Colonial Revival and subtypes – 1876 to 1955

- Dutch Colonial Revival Style – 1890 to 1940
- Cape Cod Revival – 1880 to 1960
- Georgian Colonial -- 1876 to 1955
- Minimal Traditional Style – 1925 to 1950

Prairie Style – 1901 to 1920



Identifying which style is most representative of a specific house can be a challenge. First, several of these styles overlap. In addition, many homes are eclectic combinations of features from more than one architectural style. However, the above list of homes is presented again below – together with a photo that is representative of each style. .

Martinez

**Italianate – 1840 to 1885**



Martinez



Martinez



**Gothic Revival – 1830 to 1860**



Brant Ward / The Chronicle



**Queen Anne House — 1876 to 1915**





**Queen Anne Cottage — 1876 to 1915**



Martinez

**Folk Victorian – 1870 to 1910**



Martinez



Martinez



**Stick Style (Eastlake) – 1860 to 1890**

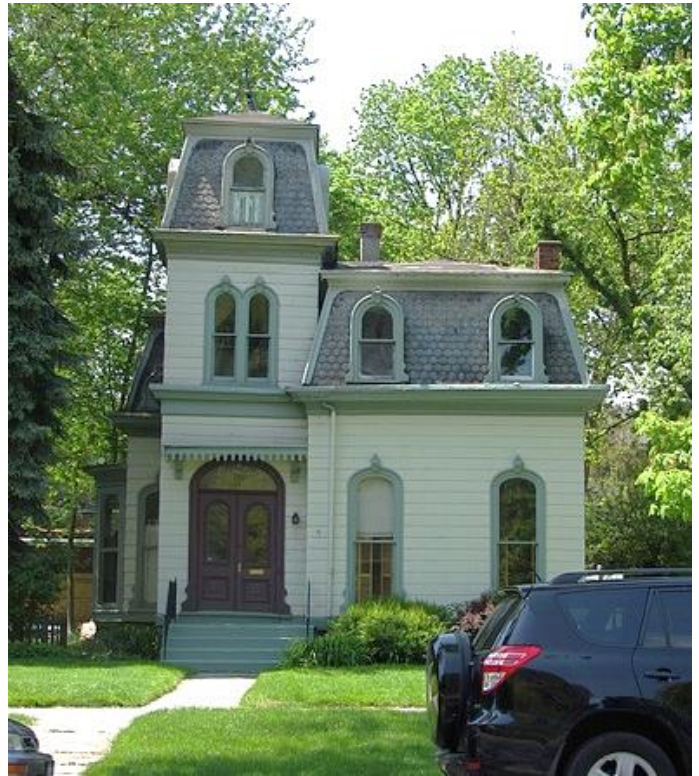


Martinez

**Second Empire – 1860 to 1900**







**Romanesque Revival – 1840 to 1900** (Very rare on the West Coast)



**Shingle Style – 1874 to 1910**







**Arts & Crafts Style — 1880 to 1920 (evolved into Craftsman)**



Martinez

**American Foursquare Style — 1900 to 1930**



*The***CASTLETON** Honor Bill \$1,989<sup>00</sup>  
No. 227 Not Cut or Fitted.





**Craftsman Style — 1900 to 1930**



Martinez

**Bungalow Style — 1900 to 1935 (can overlap with Craftsman style)**







## Rustic Style — 1900 to 1960





**Neoclassical Revival Style — 1895 to 1950**



**Italian Revival Style — 1890 to 1935**



**French Eclectic Style — 1915 to 1945**







**Tudor Revival Style — 1890 to 1940**



Martinez



Martinez



## Tudor Composite – 1925 to 1940



## English Cottage Style — 1920 to 1940



Martinez



Martinez



Storybook Style — 1920 to 1930s





## Restrained Storybook Homes – 1920's to 1930's

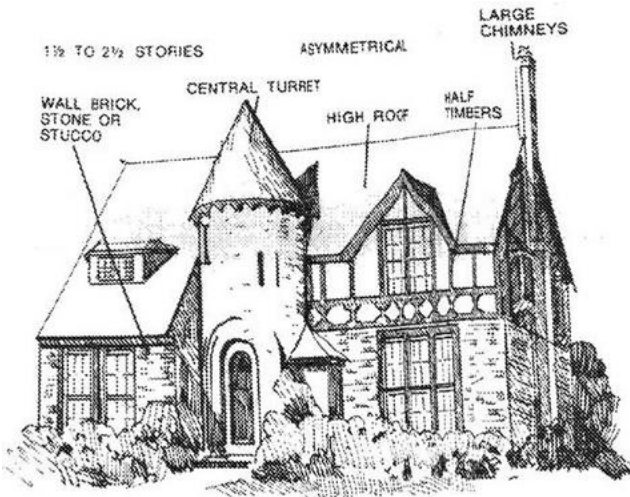


Martinez



Martinez

## French Norman (Normandy French) – 1918 – 1940



Martinez

## Californio Adobes (Monterey Colonial) 1835 – 1850's



Martinez





**Mission Revival Style — 1890 to 1940 (mainly California)**



**Spanish Revival Style — 1910 to 1940**



Martinez



6 Rooms, Bath and Toilet

*The ENCINO*





**Pueblo Revival (aka Santa Fe Style) – 1912 to 1940**



**Ranch Style – 1935 to 1980**



Martinez

**Dutch Colonial Revival Style – 1890 to 1940**





## Cape Cod Revival – 1880 to 1960



Martinez



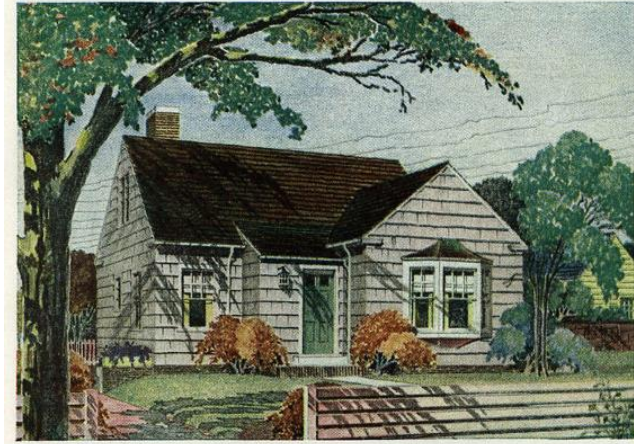
Martinez

## Georgian Colonial -- 1876 to 1955

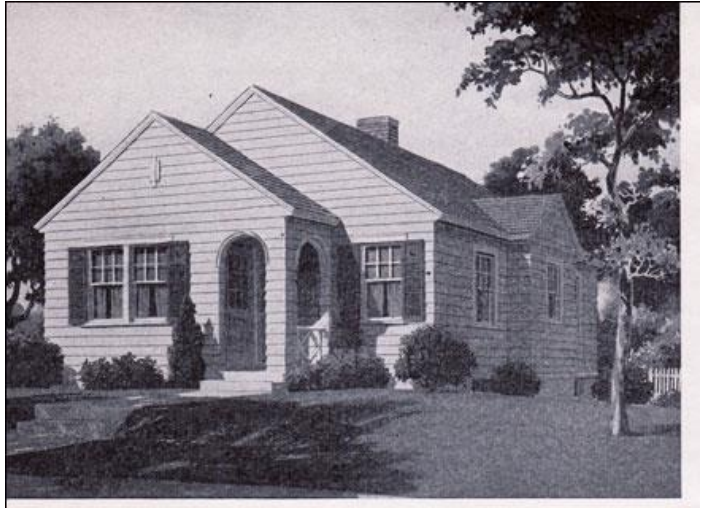




## Minimal Traditional Style — 1925 to 1950



The WORTHINGTON



## Prairie School Style — 1901 to 1920



### General Sources:

<http://www.antiquehomestyle.com/styles/> (All Home Styles)

<http://www.oldhouses.com/styleguide/> (All Home Styles)

<http://architecture.about.com/od/periodsstyles/ig/House-Styles/> (All Home Styles)

[http://www.uvm.edu/landscape/dating/residential\\_architecture/architectural\\_styles.php](http://www.uvm.edu/landscape/dating/residential_architecture/architectural_styles.php) (All Styles)

### Specific Sources:

<http://architecture.about.com/od/periodsstyles/tp/Victorian-House-Styles.htm>

(Victorian Homes)

<http://www.martinezhometour.com/site/images/craftsman%20style%20guide-pdf%20version.pdf>

(Craftsman Homes)

<http://www.oldhouseonline.com/how-to-spot-an-arts-and-crafts-house/> (A&C + Derivatives)

<http://mydesigndreams.com/?p=956> (California Bungalows)

<http://www.kathieberg.com/content/california-bungalow-1910-1925> (California Bungalows)

<http://www.antiquehomestyle.com/styles/mission-revival.htm> (Mission Revival -- 1 home only)

<http://www.oldhouseonline.com/spanish-architecture-in-america/> (Spanish Revival)



<http://www.houzz.com/ideabooks/275035/list/9-Architectural-Elements-of-Spanish-Revival-Style>  
(Spanish Revival)  
[http://www.uvm.edu/landscape/dating/residential\\_architecture/tudor.php](http://www.uvm.edu/landscape/dating/residential_architecture/tudor.php) (Tudor Revival)  
<http://architecturestyles.org/tudor-revival/> (Tudor Revival)  
[http://recentpastnation.org/?page\\_id=170](http://recentpastnation.org/?page_id=170) (English Cottage Revival)  
<http://www.glassgrapes.com/storybook.html> (Storybook Homes)  
<http://storybookers.com/> (Storybook Homes)  
<http://www-stage.dahp.wa.gov/styles/tudor-composite> (Tudor Composite)  
<http://www.victorianvilla.com/sims-mitchell/local/architecture/capecod/>  
(Cape Cod Revival)  
<http://www.antiquehomestyle.com/styles/colonial-revival.htm> (Colonial Revival)  
[http://en.wikipedia.org/wiki/American\\_Foursquare](http://en.wikipedia.org/wiki/American_Foursquare) (American Foursquare)

---

<sup>i</sup> This familiar house style (American Foursquare) got recognition and a name in 1982, in an article by Old-House Journal publishers Clem Labine and Patricia Poore. Debate is still ongoing as to whether this is a style or not. The reality is that it was a movement that developed in reaction to Victorian excess. Confusion is created because builders often incorporated elements of other more readily recognized styles: Arts & Craft, Colonial Revival and Prairie.